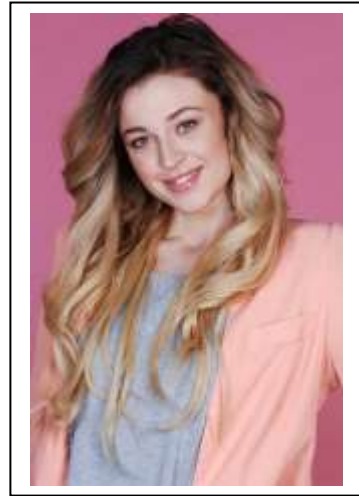


ASHLEIGH WATSON

SINGER / DANCER / ACTOR

HEIGHT: 170cm
BUST: 32"
WAIST: 26"
HIPS: 32"
DRESS SIZE: 8
SHOE: 9
HAIR: Blonde
EYES: Green
DOB: 22/6/1990
VOCAL RANGE: Alto/Mezzo/Soprano – Low C to top D
<https://www.ashleighwatsonmusic.com/>



EXPERIENCE

2016 June Carter' Johnny Cash tribute show 'Cash Up Front' – Australian Tour
2015 Katy Perry in Very Perry Katy Perry Tribute Show
2015 Lead singer Ash and Jais Cover Duo
2014 Lead role- 'Grace' Annie- Geelong Lyric
2013 Principal role- 'Meg' Phantom of the Opera- Geelong Lyric
2013 Lead Singer Allstar pop Cover Band
2013 Lead singer Bamboozle Funk Band
2013 Lead singer Grand Soul Audio Big Band
2013 Neighbours TV show- regular feature role
2012 Body double for lead actress "I, FRANKENSTEIN" movie
2012 "A Current Affair"- actor role for re-enactment
2012 Extra Work on – "House Husbands", "Winners And Losers",
2012 NAB TVC- featured role
2012 Buddy Franklin TVC- extra
2012 Lead Role -Tzeitel - Fiddler on The Roof - Geelong Lyric
2011 Lead Singer New Originals- Pop Cover Band
2011 X Factor – Successful to round 3

TRAINING:

VOCAL - Jazz, Classical - Deirdre Slater, Pop – Gayle Burrill
DANCE - Classical Ballet, Pointe, Tap, Swing, Calisthenics, Jazz, Modern, Contemporary
SCHOOLING - 2009-2010 Certificate IV Jazz Music

SKILLS

Accents, Impersonations, Presenting skills.



P. O. Box 15 Prahran VIC 3181 Cell: 0412949265
Email: katie@ueagency.com.au Website: www.ueagency.com.au